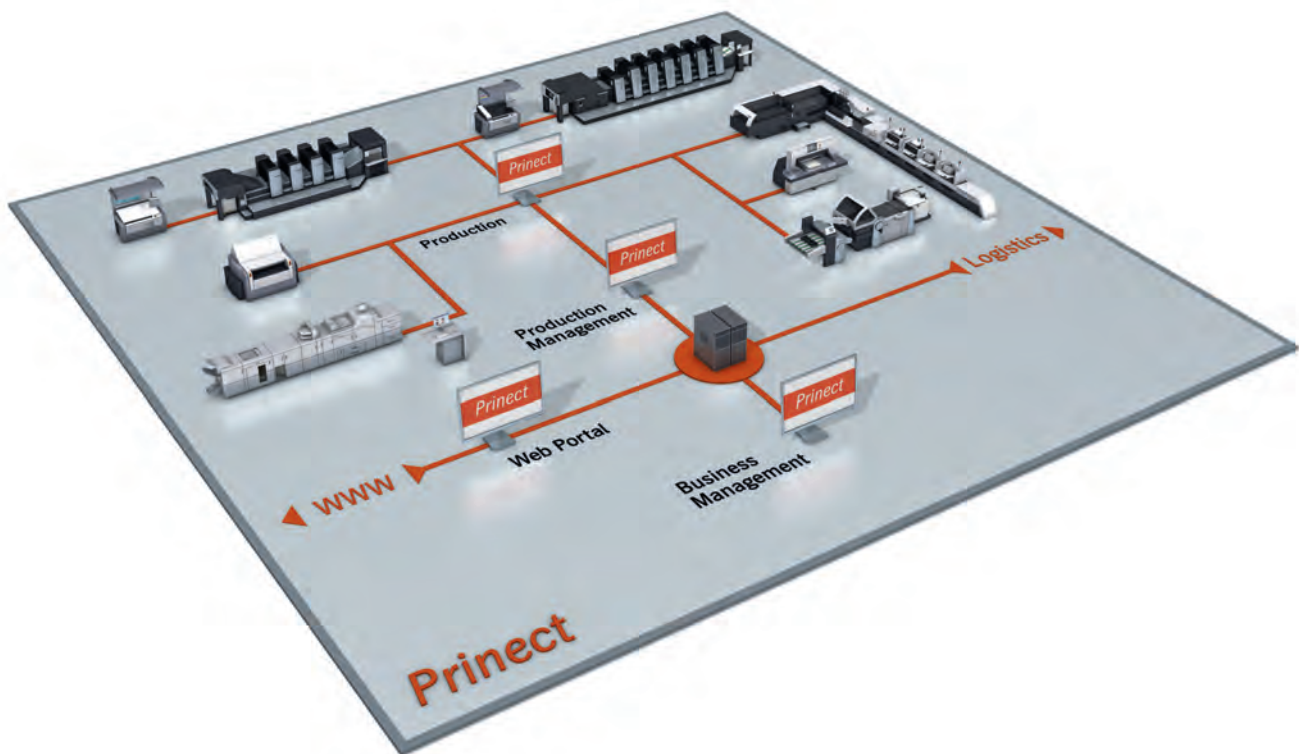


Prinect Integration Manager

HEIDELBERG



The control center for all processes • Print shop customers today expect maximum speed and flexibility. The complexity of print jobs is also increasing along with the level of coordination required for internal workflows. In order to retain an overview, schedule with precision and carry out analyses and job costing, a system is required that can control all production areas. Job data needs to be supplied auto-

matically and all parties involved must be kept informed of the current status at all times. Prinect® Integration Manager meets all these requirements in full. It enables every print shop to centrally schedule, coordinate and seamlessly control its processes.

Central Production Control

The challenge of information transfer • Transparency is achieved by bringing together a company's business management and production areas. Information and data must be transferred fast and faultless to all production departments. A smooth information flow in the opposite direction must also be assured.

Prinect Integration Manager as central interface for management information systems (MIS), prepress, digital print, press and postpress coordinates the data flow throughout the company. It manages the information centrally and performs monitoring and control functions for each of these departments that up till now have been largely separate entities. Thus, all data throughout the business process is consistent, providing the ideal basis for efficient, dovetailed work. All parties involved receive up-to-date information. This helps to speed up processes and avoid time- and cost-intensive coordination procedures and errors.

JDF – all information in a single data format

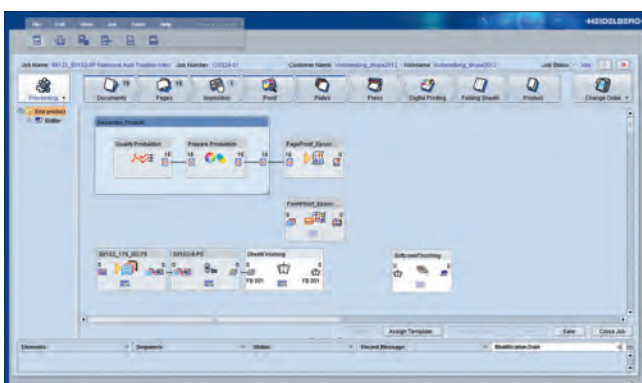
Prinect Integration Manager fully utilizes the benefits of the Job Definition Format (JDF). In Prinect Integration Manager, each job has a central JDF job ticket containing job and production data. This contains all important information such as MIS-generated job numbers, customer data, materials to be used, inks and prepress data.

The JDF also stores a process network mapping the exact sequence of all operations involved in producing a job.

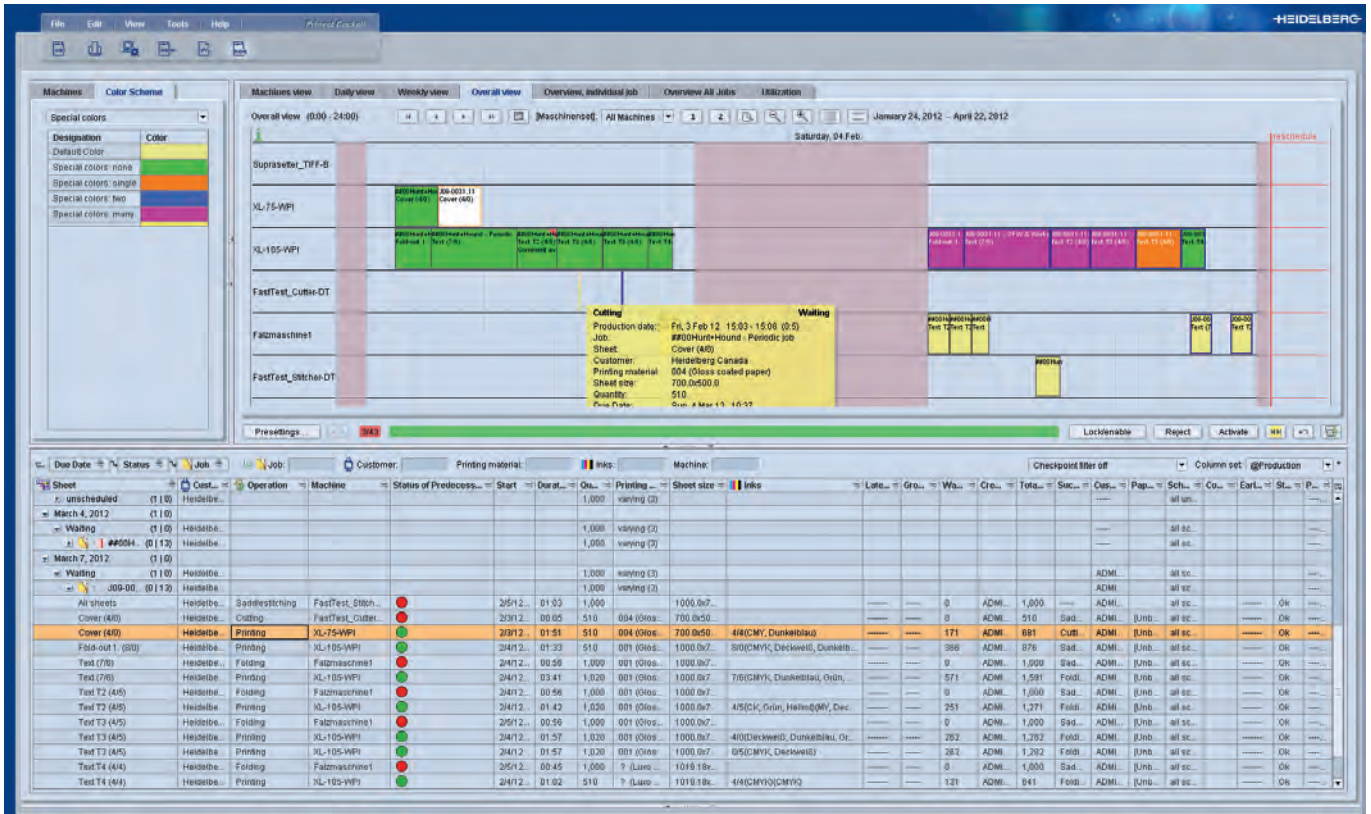
Prinect Integration Manager automatically forwards the relevant worksteps to the involved production departments for further processing. Production information, such as the start and end of operations or further machine data, is instantly fed back in a JMF format. These data are directly available to the MIS for business management evaluation, such as job costing. Time-consuming and error-prone compiling of daily time sheets becomes a thing of the past.

Master data on customers, paper types, inks or press parameters relating to multiple jobs are stored centrally. These data are stored only once and can be accessed in a consistent way at any time.

All job data at a glance • The Prinect Cockpit is the control and information center for the whole production process. The job and status information of all connected areas are displayed clearly in real time. Detailed job lists show the exact sequence of scheduled and completed operations. All cockpits can be configured individually to ensure that each user has a perfect view for his requirements.



The process network shows everyone involved the exact sequence of all the operations in a job.



Prinect Scheduler delivers a full overview of the scheduling status for all pending production jobs.

Transparent production

Sound basis for decision-making • The print shop manager can view the assembled job information and current production status conveniently on screen. This enables him to plan his next steps without having to make inquiries or checks. All information from the production stage is available centrally and can be immediately analyzed.

Information base for job administrators

With Prinect Integration Manager, all information from the production stage is also available to all operators and customer consultants in real time. Customer inquiries can be answered immediately and authoritatively. Reliable actual costing can also be performed quickly and easily with the central interface to the MIS.

More information for management and production

Department heads can view the current status of the whole production process at any time. The prepress department for example can inquire how much of the print run has been completed on the press and when printing plates will be required for the next job. This is a simple way of avoiding waiting times. Conversely, the manager of the pressroom can see when the prepress work for the next print jobs is completed. The

manager of the postpress department can view the status of the presses at any time and coordinate the planning for his department accordingly. As all information is provided in real time, coordination is significantly simplified and productivity greatly increased in the individual departments.

Comprehensive job evaluations

Prinect Integration Manager with Analyze Point provides a user-friendly overview of work performed during individual shifts and shows how much time was needed for particular jobs. From individual evaluations of linked CtP devices, presses and finishing equipment to viewing the previous 15,000 jobs, all results are displayed in clear graphics and tables. Deviations, delays in setting up the machines or increased waste can be precisely localized and taken into consideration when making planning decisions. Potential for optimization or savings is identified and can be utilized to increase production efficiency.

Prinect Scheduler makes production planning faster and more reliable

The optional Prinect Scheduler expands Prinect Integration Manager by adding a digital planning board. It allows efficient resource management and provides complete transparency. Individual operations or entire jobs can be planned at the Prinect Cockpit. Everyone has an overview of the current time targets leading to a maximum adherence of customer deadlines.

Executing and displaying of short-notice changes

Prinect Scheduler displays the current status of capacity utilization in real time. Sudden changes are integrated directly into the digital planning board and can be viewed as the new status quo immediately by all parties involved. This means no information is lost and all decisions are based on real conditions.

Different scheduling strategies • The digital planning board gives planners flexible support for all types of production planning. The spectrum ranges from fully manual planning of individual operations to rule-based scheduling of complete production jobs. One possibility is to perform automated planning based on known delivery dates. Prinect Scheduler provides the ideal tool for all planning needs. In addition to the intelligent automated functions of the digital planning board, the planner can also perform manual adjustments. Prinect Scheduler makes planning print jobs much faster, easier and more flexible.

Early warning system for more reliable

production • The key stages of the production process are controlled on the basis of milestones, known as checkpoints. In Prinect Scheduler, users can view at any time whether, for example, the printing plates are ready, enough paper is available or the proofs have been released. A traffic light system indicates when deadlines have been missed. The planner can see at a glance where problems originate and intervention is required.

This information is available to every employee working with Prinect Cockpit. Digital production planning therefore enables a transparent overview of the production process and the status of each individual print job. It also clearly displays all the available and assigned capacity for all connected machines in real time. This significantly reduces the coordination processes required between everyone involved e. g. for inquiries from the sales department.

Save time and money with Prinect Scheduler

Similar operations, like print runs with the same spot colors, can be scheduled on the same press in direct succession. This significantly reduces make-ready times and waste. Work commissioned with external service providers can also be integrated into production planning. The comprehensiveness of the information effectively minimizes coordination problems and delays when outsourcing production tasks.

The full Prinect workflow with Prinect Integration Manager

Prinect is the modular print shop workflow from Heidelberg® that can be flexibly adapted to the individual requirements of every company. Depending on the configuration, the integrated Prinect workflow extends from the prepress stage with Prinect Prepress Manager through the pressroom with Prinect Pressroom Manager and digital printing with Prinect Digital Print Manager to the postpress stage with Prinect Postpress Manager and the management information system Prinect Business Manager. The production workflow can also be run with MIS solutions from other providers or, with limited functionality without an MIS connection. Prinect optimizes and automates workflows and therefore plays a key role in optimizing coordination processes and increasing throughput while maintaining consistently high quality.

Prinect Prepress Manager • With its tools for perfect preparation of print data, Prinect Prepress Manager enables a fully automated workflow. It makes prepress processes more reliable and convenient.

Prinect Digital Print Manager • Prinect Digital Print Manager fully integrates Heidelberg Linoprint digital print systems into the print shop workflow. Digital print systems from other leading manufacturers can be connected via Prinect Digital Print Connector.

Prinect Pressroom Manager • Prinect Pressroom Manager centrally controls all operations in the pressroom and manages the necessary job data. Press makeready time and waste are significantly reduced thanks to precise ink presettings. All production feedback from the pressroom is evaluated in real time using Prinect Pressroom Manager and forwarded to a connected MIS. Automated presses from Heidelberg can be directly integrated. Non-automated presses and presses from other manufacturers can also be integrated via a Data Terminal.

Prinect Postpress Manager • Prinect Postpress Manager is the first system to integrate finishing equipment into the print shop workflow. This means postpress processes are transparent for everyone, enabling optimal planning and sustainably faster production.

Prinect Web-to-Print Manager • Prinect Web-to-Print Manager is used in the Prinect workflow to set up online shops in which print shop customers can order print products via the internet.

Publishing Information

Printed in: 03 /12
Photographs: Heidelberger Druckmaschinen AG
Platemaking: Suprasetter
Printing: Speedmaster
Finishing: Stahlfolder
Consumables: Saphira
Fonts: HeidelbergGothicMI
Printed in Germany

Trademarks

Heidelberg, the Heidelberg logotype and Prinect are registered trademarks of Heidelberger Druckmaschinen AG in the U.S. and other countries. All other trademarks are property of their respective owners.

Subject to technical modifications and other changes

Heidelberger Druckmaschinen AG

Kurfuersten-Anlage 52-60

69115 Heidelberg

Germany

Phone +49 6221 92-00

Fax +49 6221 92-6999

www.heidelberg.com

