

SAMSUNG

About Samsung Electronics Co. Ltd.

Samsung Electronics Co. Ltd. is a global leader in technology, opening new possibilities for people everywhere. Through relentless innovation and discovery, we are transforming the worlds of televisions, smartphones, personal computers, printers, cameras, home appliances, LTE systems, medical devices, semiconductors and LED solutions. We employ 336,000 people across 79 countries with annual sales of US\$167.9 billion. To discover more, please visit www.samsung.com

Samsung Ultrasound SONOACE X7

A compact system with advanced performance



SAMSUNG HELPLINE

Call: 1800 3019 8332
1800 304 8332
(MTH/3331)

For more information, please write to press.marketing@samsung.com
Corporate e-News Unit, 3rd & 6th Floor, Tower-C, 171, A/Teah Square,
Zone 1 - 02, Self-Service Road, Gurgaon-122002, Haryana (India).
Visit www.samsung.com/in/healthcare

PHOTO: GETTY IMAGES

EXPERIENCE
A New Healthcare
Solution

SAMSUNG

Re-defined

The SONOACE X7, with Samsung's outstanding 2D performance, sensitive Pulsed Wave and color Doppler redefines how to meet the essential needs of users. The SONOACE X7 offers, e-Motion Marker™, ElastoScan™, Strain, Stress Echo and many additional tools for diagnosis in multiple applications.



Accurate and easy diagnosis

3 Port connectivity

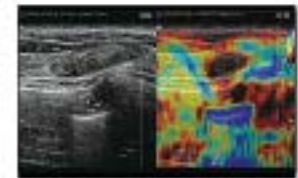


3D Free-hand -

User friendly and easy to acquire



ElastoScan™



Distal Parenchyma

Advanced performance for your efficiency

Accurate

The effective utilization of a wide Dynamic Range, in combination with sophisticated image processing features like SC[™], DMR+[™] ensures consistent high resolution images with the SONOACE X7

- DDI
- DMR+[™]
- Wide Dynamic Range
- Multi Beam Processing
- SC[™] (Spatial Compound Imaging)[™]
- FSI[™] (Full Spectrum Imaging)[™]
- SRF[™] (Speckle Reduction Filter)[™]

Easy

Samsung's advanced features such as ElastoSca[™] and c-Motion Marker[™] ensure easy detection upholding diagnostic confidence.

- ElastoSca[™]
- Strain
- Stress Echo
- c-Motion Marker[™]
- Panoramic

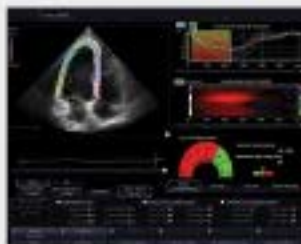
Fast

Advanced 2D recognition software, QuickScan[™] and Auto IMT[™] allow the SONOACE X7 to optimize the workflow with the simple push of a button.

- QuickScan[™]
- Auto IMT[™]
- Trapezoidal View

Strain[®]

Strain Function quantitatively displays cardiac motion using motion vectors and diagnoses cardiac dyssynchrony. User can detect information of radial apical tracking easily and obtain trajectory with strain information, which enables clinician to have intuitive diagnosis.



Stress Echo[®]

The SONOACE X7 provides a package for pharmacological Stress Echo, diastolic Stress Echo, and exercise Stress Echo. The programmable features of each Stress Echo study give you a streamlined workflow to fit your needs. Stress Echo supports a flexible reporting format that can be individually optimized for your workplace environment.

Optimized transducer set configuration

Samsung's transducer technology ensures excellent visualization that gives you powerful diagnostic capabilities.

Curved array transducers



C2-8

- Application: abdomen, skeleton, gynecology
- Field of view: 68.7°



C2-5

- Application: abdomen, skeleton, gynecology
- Field of view: 67.3°



CF4-9

- Application: abdomen, vascular, pediatric
- Field of view: 92°

Linear array transducers



L3-8

- Application: abdomen, vascular, small parts
- Field of view: 28.7°mm



LS-12/50

- Application: vascular, small parts, musculoskeletal
- Field of view: 22°mm



LNS-12

- Application: vascular, small parts, musculoskeletal
- Field of view: 22°mm

Endocavity transducers



EVN4-9

- Application: skeleton, gynecology, urology
- Field of view: 148°



ER4-9

- Application: skeleton, gynecology, urology
- Field of view: 148°



CW2.0

- Application: cardiac

Phased array transducers



P2-4

- Application: abdomen, cardiac, TCD
- Field of view: 90°



PN2-4

- Application: abdomen, cardiac, TCD
- Field of view: 90°



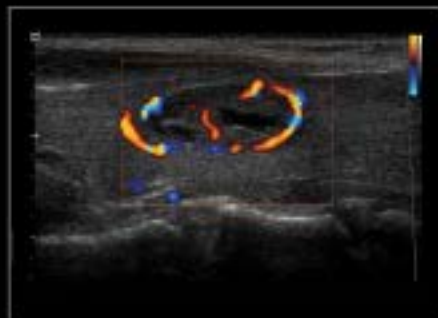
SP3-8

- Application: abdomen, cardiac, TCD
- Field of view: 90°

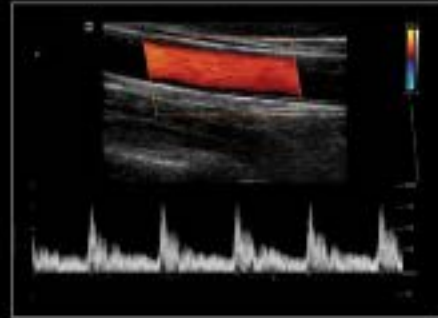
Image gallery



Fetal profile at 22 weeks



Thyroid nodule of Doppler Image



Carotid artery Doppler image



Fetal blood circulation



Kidney



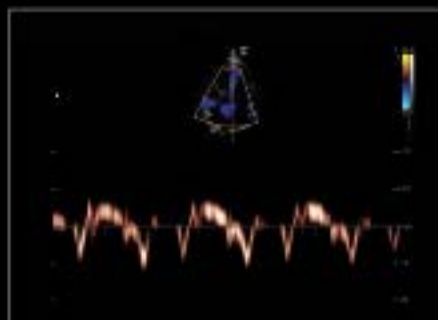
Liver



U.A. Doppler (ovum)



Vaginal image of ovary follicles



Adult heart with Pulsed Wave TDI



Trivial Regurgitation

Ergonomic design

The SONOACE X7 is a slim and compact system with many ergonomic features. The control panel can be set by the user to the desired height. And thanks to its light weight, it provides easy mobility. Also, the control panel offers a simple user interface with customizable menu buttons.



Control panel

The control panel can easily be adjusted to the user's preferred height for a better working position. The control panel's design contributes to the improved workflow of the SONOACE X7.



Front and rear handle

To further improve the mobility of the SONOACE X7, it is equipped with handles on both side of the front and the rear.



48.2 cm (19") monitor

The SONOACE X7 offers a closer 48.2 cm (19") monitor view which contributes to a more accurate diagnosis.



e-Motion Marker™ sensor

The SONOACE X7 provides Samsung's motion sensor for endocavity transducers that is detachable.

*Some features may be optional.

