



The unique.
Speedmaster CS 92.



Hugely efficient.

Speedmaster CS 92.

The Speedmaster® CS 92 is tailor-made for commercial print jobs in DIN format. It therefore offers you a solution with the best possible price/performance ratio, for the cost-effective production of brochures, catalogs and flyers.

Gain an advantage over the competition. Benefit from 20 percent cheaper printing plates than the 70 × 100 cm (27.56 × 39.37 in) format.

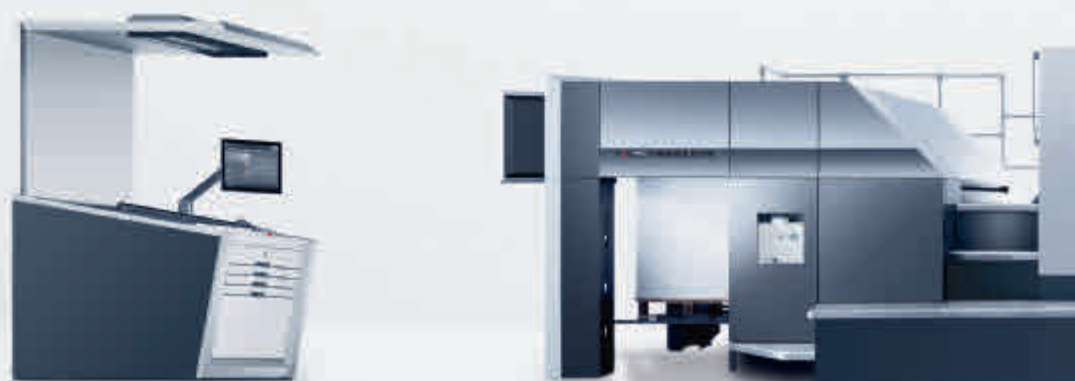
Equipped with the established technology from Heidelberg® and the new operating concept, the Speedmaster CS 92 impresses with its quality and ease of use and is a future-proof investment. It offers high productivity for processing a wide range of substrates, with printing speeds of up to 15,000 sheets an hour. The use of LED dryers enables fast finishing and an extended range of applications. Further features are its simple, intuitive operation, integration in the Prinect® workflow and equipment packages such as the Prinect Easy Control spectrophotometric color measurement system.

What's more, each Speedmaster CS 92 is backed up by the comprehensive service offering from Heidelberg. This enables you to get the most from your printing press at all times thanks to maintenance, remote functions, perfectly coordinated consumables, and an international service and spare parts network.

Count on the Speedmaster CS 92. On a secure investment in top results and a future-proof machine.

Outstanding characteristics.

The facts at a glance.



Highlights:

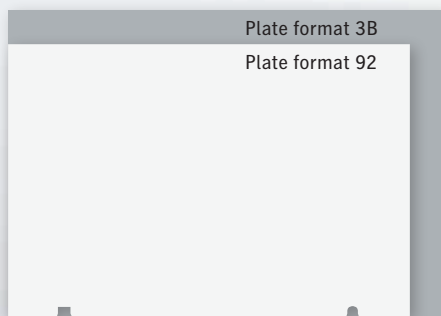
- The Heidelberg User Experience at the Speedmaster with the Prinect Press Center® XL 3 sets new standards for the user experience on the press. The unique navigation tool Intellistart® 3 and the assistance systems of the new Speedmaster Operating System ensure predictable results and increased performance
- Preset Plus feeder and delivery for a hugely diverse range of substrates and precise formation of piles up to 1.3 meters (50.98 in) high
- Prinect Easy Control color measurement system for reliable, standardized print production
- AirTransfer system for contact-free sheet transport on an air cushion, without marks or scratches
- Alcolor® dampening unit with Vario function prevents hickeys and stabilizes the ink-water balance for optimum print quality
- Stable print quality at a maximum printing speed of up to 15,000 sheets an hour
- Attractive price/performance ratio thanks to equipment that focuses on commercial printing needs
- 20 percent lower plate costs than the 70 × 100 cm (27.56 × 39.37 in) format
- A secure investment on the basis of the Speedmaster CD 102 platform
- Extended range of applications thanks to an additional 1 cm (0.3937 in) in the circumferential direction: in addition to traditional 16-pagers in A4, imposition layouts with nine A4 repeats or six-pagers with three rows of repeats can be achieved
- Fast in finishing thanks to the use of LED dryers

➔ You can find more about technical data and facts here: [heidelberg.com/cs92/technical-data](https://www.heidelberg.com/cs92/technical-data)

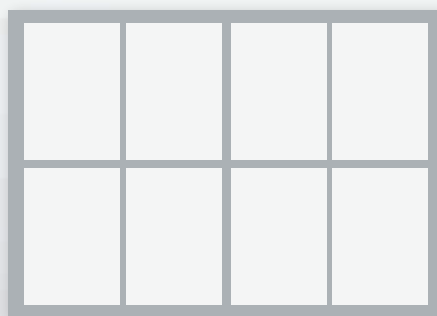
Superior performance made easy. The Speedmaster CS 92 flexibly prints a variety of imposition layouts in 92 format. Designed as a future-proof investment offering top quality and short makeready times, it cost effectively covers a wide range of commercial print jobs.



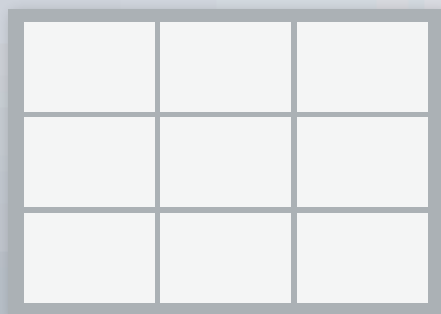
Possible imposition layouts:



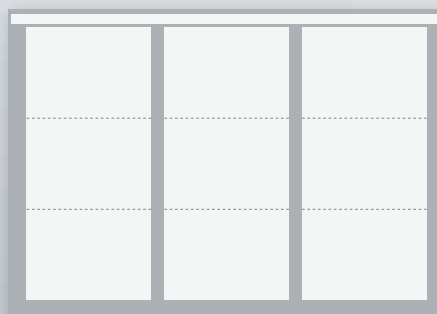
Printing plate cost savings



Traditional 16-pager, A4, portrait



Nine repeats; A4, landscape



Three 6-pagers with fold lines; A4, landscape



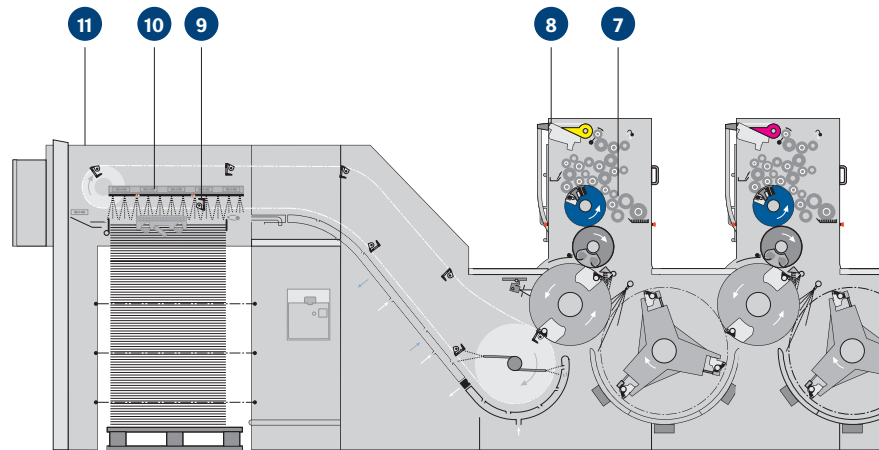
The UV preparation for LED UV dryers enables fast finishing and an extended range of applications.



Sheet brakes can be positioned as desired in the delivery, ensuring precise pile formation without marks.



Super-fast ink changes thanks to ink fountain liner.



Speedmaster CS 92-4. The machine shown is a sample configuration. Some of the equipment features mentioned are optional.

1 Feeder

- The Preset Plus feeder is designed for piles up to 1.3 meters (50.98 in) high. With preset air settings and material-dependent speed compensation, it separates a large variety of substrates with great precision.

2 Sheet alignment

- Precise sheet alignment is ensured by accurate, remote setting of front lays, automated sheet arrival control and sheet slowdown feature.

3 Monitoring

- Sheet monitoring by sensors and two self-calibrating double-sheet detectors support continuous production.

4 Printing unit

- Reduced maintenance thanks to cylinder surfaces with a high-quality finish, and special gripper systems. Central remote register adjustment shortens setup times.

5 AutoPlate

- The semi-automatic plate changer works quickly and precisely at the touch of a button, and saves valuable makeready time.

6 AirTransfer system

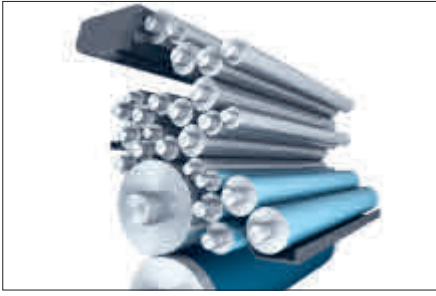
- The AirTransfer system with Venturi nozzles guarantees contact-free, stable sheet transport over the entire printed stock range of substrates 0.03 to 0.6 mm (0.0012 in – 0.024 in) thick.

7 Inking unit and film dampening system

- The speed-compensated Alcolor film dampening unit with Vario function ensures a stable ink-water balance and prevents hickeys. The inking unit with high storage capacity promises stable coloring over the entire production run.

8 Ink fountain

- The calibration-free ink fountain with 500 increments per color zone achieves superior quality and can be cleaned quickly and easily thanks to an ink fountain liner.



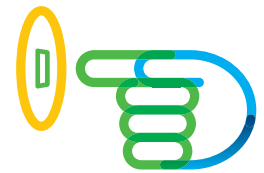
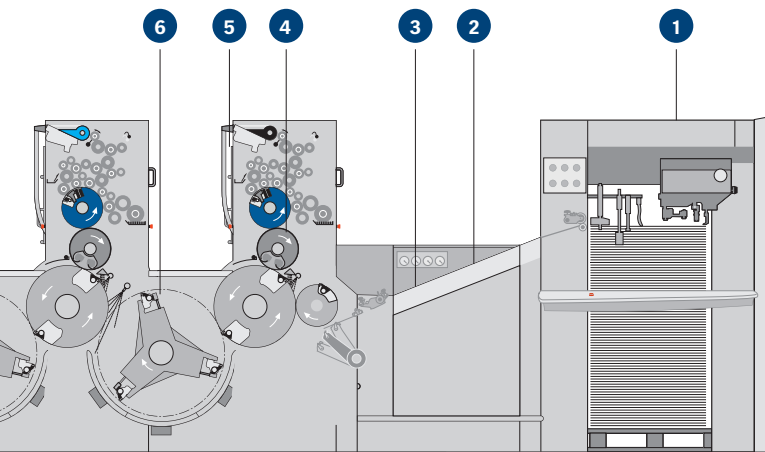
The inking unit and dampening system ensure a stable ink-water balance without hickeys, and therefore uniformly constant coloring over the entire production run.



AirTransfer system for contact-free sheet transport on an air cushion, without marks or scratches.



Feeder table with central suction tape for precise sheet separation with a varied range of substrates.



Push to Stop.
The key to the Smart Print Shop.

9 Sheet brake

- The sheet brakes can be positioned as desired, preventing marks on the sheet. They ensure rapid work-and-turn and short throughput times.

10 StaticStar

- Antistatic equipment minimizes electrostatic charging of sheets and ensures uniform sheet separation and stable sheet travel, even with static materials.

11 Delivery

- The Preset Plus delivery with intuitive navigation via touchscreen and jogwheel ensures precise pile formation. It enables problem-free second print runs and postpress.

+ Prinect Press Center XL 3

- The controlstation Prinect Press Center XL 3 with the intuitive Intellistart 3 operator navigation system for a fast, process-oriented setup and high usability.

+ Maintenance

- Fully automated central lubrication of the entire machine on the drive and operator sides considerably cuts maintenance times.

→ You can find more about the details of your Speedmaster here: heidelberg.com/en/cs92

Leader in the printing process.

10 clear benefits.

Makeready



1 hour

washup time per day saved thanks to the world's fastest washup systems. Intelligent, parallel washup programs cut two minutes off each washup cycle compared with the industry standard.

5 minutes saving per ink change and printing unit – instead of five or even ten minutes of cleaning, each ink fountain is cleaned in just one or two minutes.

60 minutes faster in postpress thanks to freely positioned sheet brakes and Venturi sheet guidance for faster work-and-turn.

OEE

Improved overall equipment efficiency – navigated printing reduces process and operator-dependent downtimes.

Productivity

50 %

higher piles than other format 92 machines – fewer print interruptions, less space required.

20 % lower plate costs with the 92 format.

50 %

more productive due to three repeats instead of two for six pages A4 and **12.5 %** more productive due to nine A4 repeats instead of eight with 1 cm (0.3937 in) larger print format.

User friendliness

70 %

fewer operating steps per job change thanks to the patented Intellistart.



Just

2 clicks

to select and release job for printing.

Roller settings are checked in just **5 minutes** and 20 minutes are saved per adjustment cycle with the **Roller Check Assistant** software.

Heidelberg Druckmaschinen AG

Kurfuersten-Anlage 52 – 60

69115 Heidelberg

Germany

Phone +49 6221 92-00

Fax +49 6221 92-6999

heidelberg.com

Publishing Information

Printed in: 03/20

Photographs: Heidelberg Druckmaschinen AG

Platemaking: Suprasetter

Printing: Speedmaster

Finishing: Stahlfolder

Paper: Magno Satin Sappi Europe

Consumables: Saphira

Fonts: Heidelberg Antiqua MI, Heidelberg Gothic MI

Printed in Germany

Trademarks

Heidelberg, the Heidelberg logotype and Alcolor, Intellistart, Prinect, Prinect Press Center, Saphira, Speedmaster, Stahlfolder, StaticStar and Suprasetter are registered trademarks of Heidelberg Druckmaschinen AG in the U.S. and other countries. All other trademarks are property of their respective owners.

For details on the emissions of the Speedmaster CS 92, please visit us at heidelberg.com/emissiondetails

Subject to technical modifications and other changes.

Liability for contents

The contents of this brochure have been prepared with great care. No warranty or liability is accepted for the correctness, completeness, or accuracy of the information. There is no guarantee that the customer will be able to achieve the values and numbers (e.g. relating to the function and performance of the machine and the software) specified in the brochure. The information provided is based on ideal conditions and proper use of the machine and the software. Achieving these values and numbers depends on a variety of factors and circumstances that are outside the control of Heidelberg (e.g. machine settings, technical conditions, ambient conditions, raw materials and supplies used, consumables used, standard of care and maintenance of the machine, expertise of the operator, meeting the respective system requirements, etc.). They therefore constitute neither characteristics of the machine or the software nor a guarantee. This brochure does not constitute a contractual offer and is solely for the purpose of providing (non-binding) information.



sappi | Magno