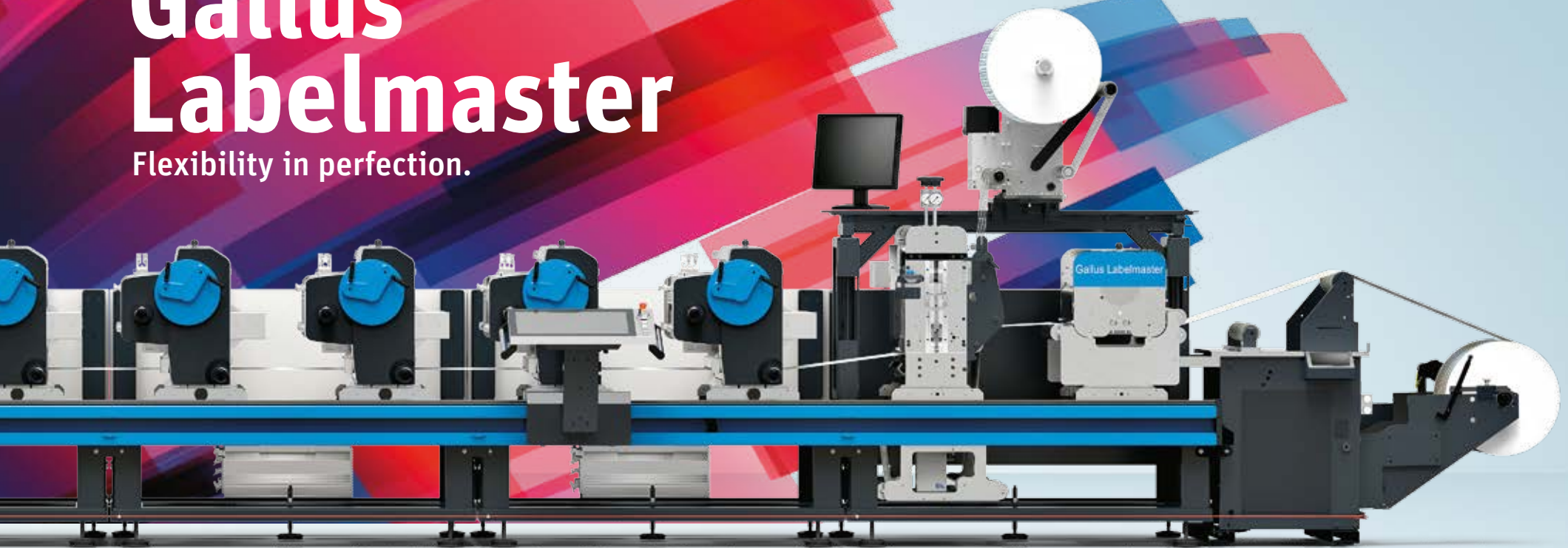


Success and Security  
for the Labelprinter.

**gallus**

# Gallus Labelmaster

Flexibility in perfection.



[www.gallus-group.com](http://www.gallus-group.com)

Member of the Heidelberg Group

# Flexibility in perfection

You can now plan the future by harnessing the revolutionary flexibility of the Gallus Labelmaster. From the economical basic model to the fully equipped version, the possibilities are endless for configuring your label press to meet the needs of your business model, while benefiting from unbeatable value for money and the impressive quality for which Gallus is renowned.

## The Gallus Labelmaster opens up a new dimension in flexibility

The new Gallus Labelmaster gives printing companies on the label and packaging markets unprecedented flexibility, both now and for the future. This is made possible by the revolutionary platform design, enabling all customer-specific needs to be met on a made-to-measure basis. Depending on the particular model, a variety of different printing modules are available to personalise the Gallus Labelmaster to meet the exact requirements of any business model.

### Other key facts

- Minimal paper waste thanks to extremely short web path (just 1.4 m between printing units)
- Printing speeds of up to 200 m/min
- Wide choice of substrates thanks to printing cylinders and anilox rollers driven directly by servo drives
- Precise and stable register accuracy across all printing speeds
- Printing methods – flexographic, screen and cold foil (hot foil embossing available from 2018 onwards)





The Gallus Labelmaster impresses with its unlimited flexibility. Thanks to the new platform design, virtually all customer-specific needs can be catered for.





# FLEXIBILITY AND INDIVIDUALITY

Flexibility is the ability to see a challenge as an opportunity and use it to optimum effect.



## Tailor-made for any business model.

The unique modularity of the Gallus Labelmaster meets all popular needs on the market, both now and in the future – from commodity labels to sophisticated, high-finish products. Depending on the model line, modules can be freely selected and configured, thus enabling the press to be customised to suit any requirements.

### Users can choose from a total of three model lines

- **Gallus Labelmaster**

The basic version represents outstanding price-performance ratio.

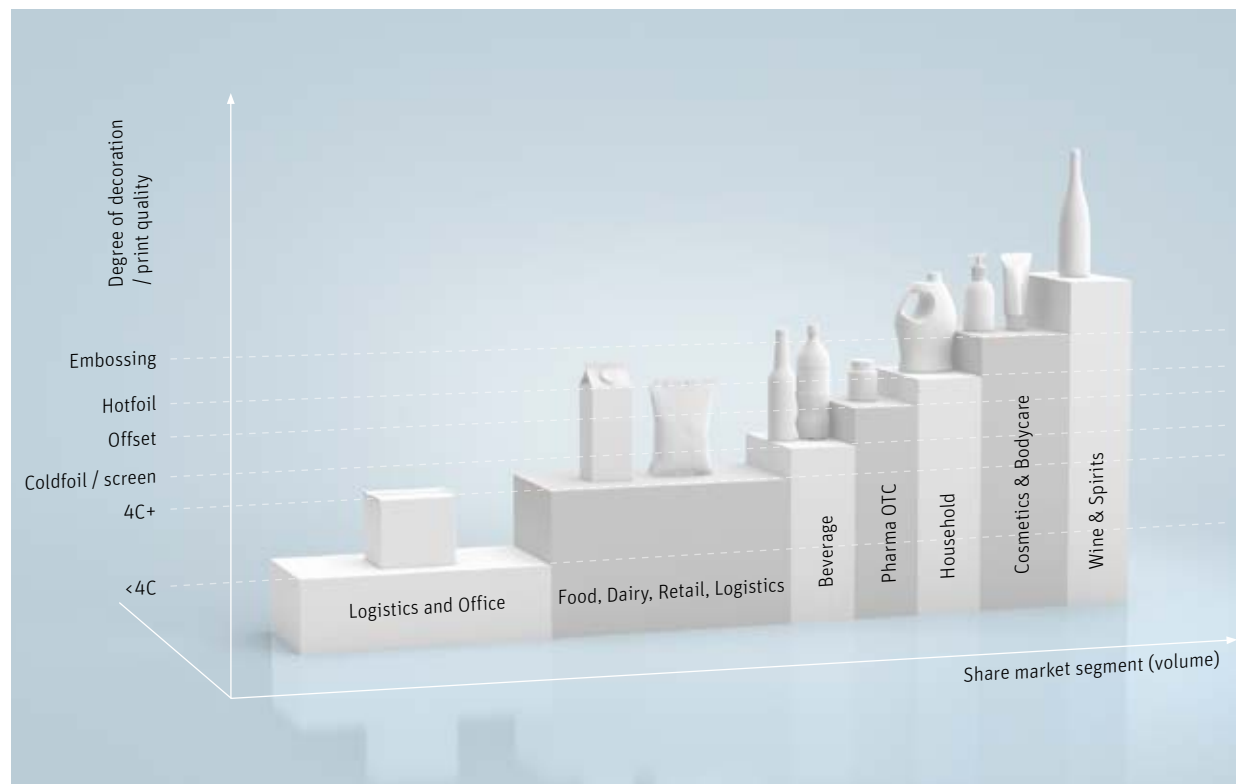
- **Gallus Labelmaster Plus**

The Plus version offers extended features and the option of combining it with the Advanced modules.

- **Gallus Labelmaster Advanced**

Process flexibility in any position and a high level of automation ensure exceptional flexibility.

The unique modularity of the Gallus Labelmaster makes it possible to meet all popular needs on the market, both now and in the future – from commodity labels to sophisticated, high-finish labels.



# EASY TO USE

The most important aspect of easy operation is the time saved and thus the productive use of valuable capacity.



## Easy in use – spectacular performance

While the Gallus Labelmaster features extensive modules, delivering a high level of flexibility, it nonetheless boasts intuitive and straightforward operation with automated presetting functions. All product lines are thus extremely easy to get to grips with. There is a clear focus on simplicity, speed and reliability – from quick and easy changes of the lightweight aluminium printing cylinders to fully integrated operation, whether it's via the user-friendly HMI touch panel or directly on the printing unit. At Gallus, we call this “best-spot interaction”.

### The resulting benefits

- Intuitive operating philosophy
- Easy to get to grips with
- Short setup times



The intuitive HMI touch panel is clearly designed and reinforces the user-friendliness of the Gallus Labelmaster.



Short setup times and fast job changes are assured, whether it's one person on the machine or several people working on it simultaneously.



The hallmarks of the new Gallus Labelmaster printing unit are its functionality and ease of use.



The ink chamber can be easily changed in just a few quick steps.



It isn't easy to combine perfection and exceptionally high speed – yet this is exactly what sets Gallus apart with its innovative strength and decades of experience.



**SPEED AND  
PERFORMANCE**



## Ultra fast and ultra precise

The Gallus Labelmaster doesn't just impress with its flexibility but also thanks to its performance in production. This new machine platform handles even high printing speeds of up to 200 m/min with absolute register accuracy. An optimised ink chamber ensures perfect ink transfer to anilox rollers at all times with minimal splashing and reduced foaming.

## Further benefits for even greater profitability

- Fast job changes in just a few steps
- Easy changes of lightweight aluminium printing cylinders
- High printing speed
- Ink chamber optimised for high speeds



The newly developed flexographic printing unit of the Gallus Labelmaster supports extremely fast cylinder changes, enabling job changes within seconds.



The ink chamber is also designed for high printing speeds, thus reducing foaming and ensuring optimum ink transfer to the anilox rollers.

Automated printing cylinder washing greatly simplifies the cleaning process for printing plates.

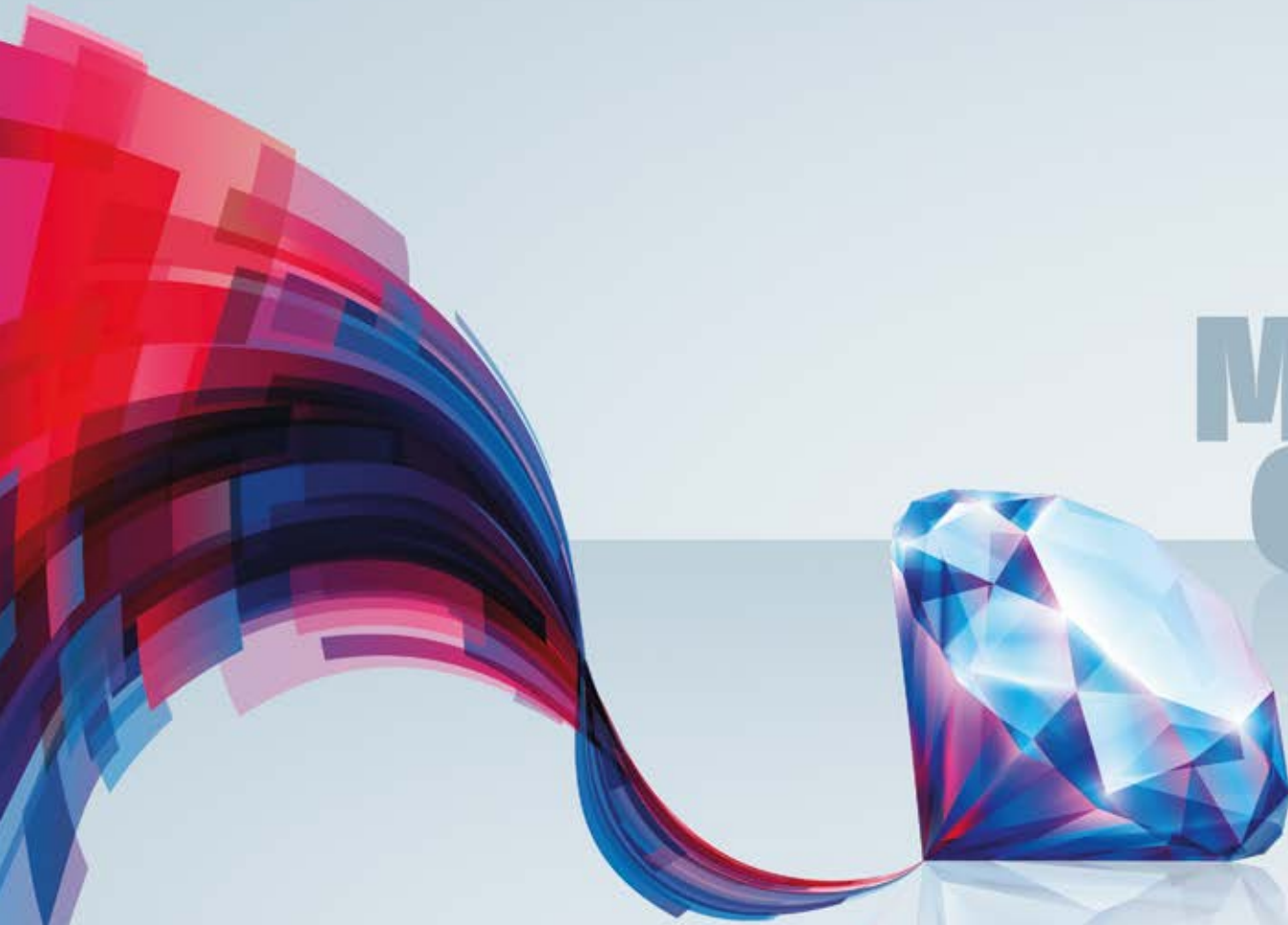


Before



After

# MAXIMUM QUALITY



Quality and brilliance are both  
the result of ultra precision.



## New printing units – precise and efficient

With the new press platform, Gallus has also developed a new locking system that enables quick, easy and accurate changes of printing units\*. The system positions them on the base unit with absolute precision and ensures 100% register accuracy across a wide spectrum of substrates.



The Gallus Labelmaster also delivers maximum flexibility in selecting the substrates to be printed.



## Servo-driven printing cylinders

The Gallus Labelmaster's robust design makes it ideal for day-to-day industrial operations. Two servomotors in the flexographic printing unit drive both the printing cylinder and anilox roller directly, thus ensuring typical premium Gallus print quality. The newly designed screen printing unit also impresses with perfect high-end finishing.



The lightweight aluminium printing cylinders are a completely new development by Gallus engineers.

\* only for Gallus Labelmaster Advanced modules



# Gallus Labelmaster

## The finest print quality

Whether the Gallus Labelmaster is running at a low setup speed or being accelerated to a maximum speed of up to 200 m/min, its printed image is always in register, thus underlining the new machine platform's unique quality and precision. Time-consuming corrections are not needed.



The Gallus Labelmaster is always in register, whatever the printing speed.



The manual feed of the printing cylinder is quick and easy to use.



Absolute precision and exceptionally robust – the new directly driven lightweight aluminium printing cylinders equipped with bearer rings.

## The Gallus Labelmaster – combining speed and simplicity with profitability

The Gallus Labelmaster also sets new standards in cost-effectiveness – from dramatic time savings, thanks to its ease of use and fast printing speed, to low waste and minimal material consumption. The Gallus Labelmaster impresses from the first print and makes label printing easier, faster and more profitable.

### Easy

- Intuitive operation with HMI touch panel
- Can be configured to meet individual needs, depending on the model line
- Wide choice of substrates
- Lightweight and robust aluminium printing cylinders with bearer rings

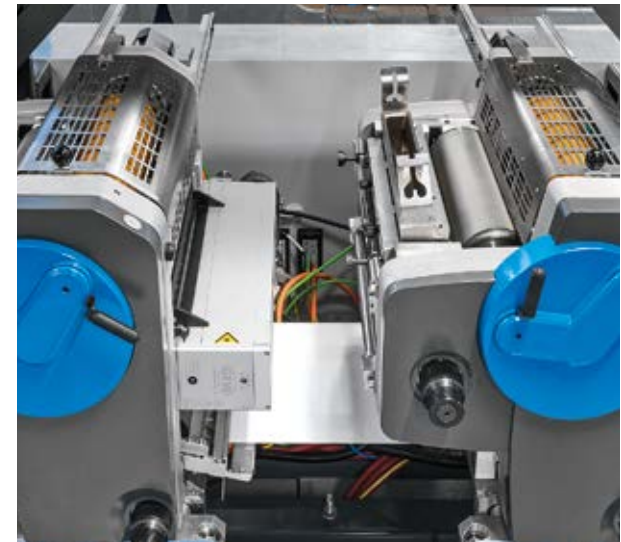
### Fast

- High printing speeds of up to 200 m/min
- Rapid job changes
- Short setup times
- Easy to get to grips with

### Profitable

- Minimal paper waste thanks to extremely short web path (just 1.4 m)
- Precise and stable register accuracy
- Outstanding premium print quality with high-end finishing
- Optimum ink transfer to anilox rollers
- Low consumption of ink and substrates

Profitability also depends on the diameter of the printing cylinders – various sizes are available for the Gallus Labelmaster, ranging from 8" to 25".



The short web path of just 1.4 m between printing units is enough in itself to minimise waste.

# Flexibility in perfection

Extremely high printing speeds of up to 200 m/min

## The process levels of the Gallus Labelmaster

### Secondary process level

Rail system for installing various processes (e.g. cold foil, lamination, web-turn mechanism)

### Primary process level

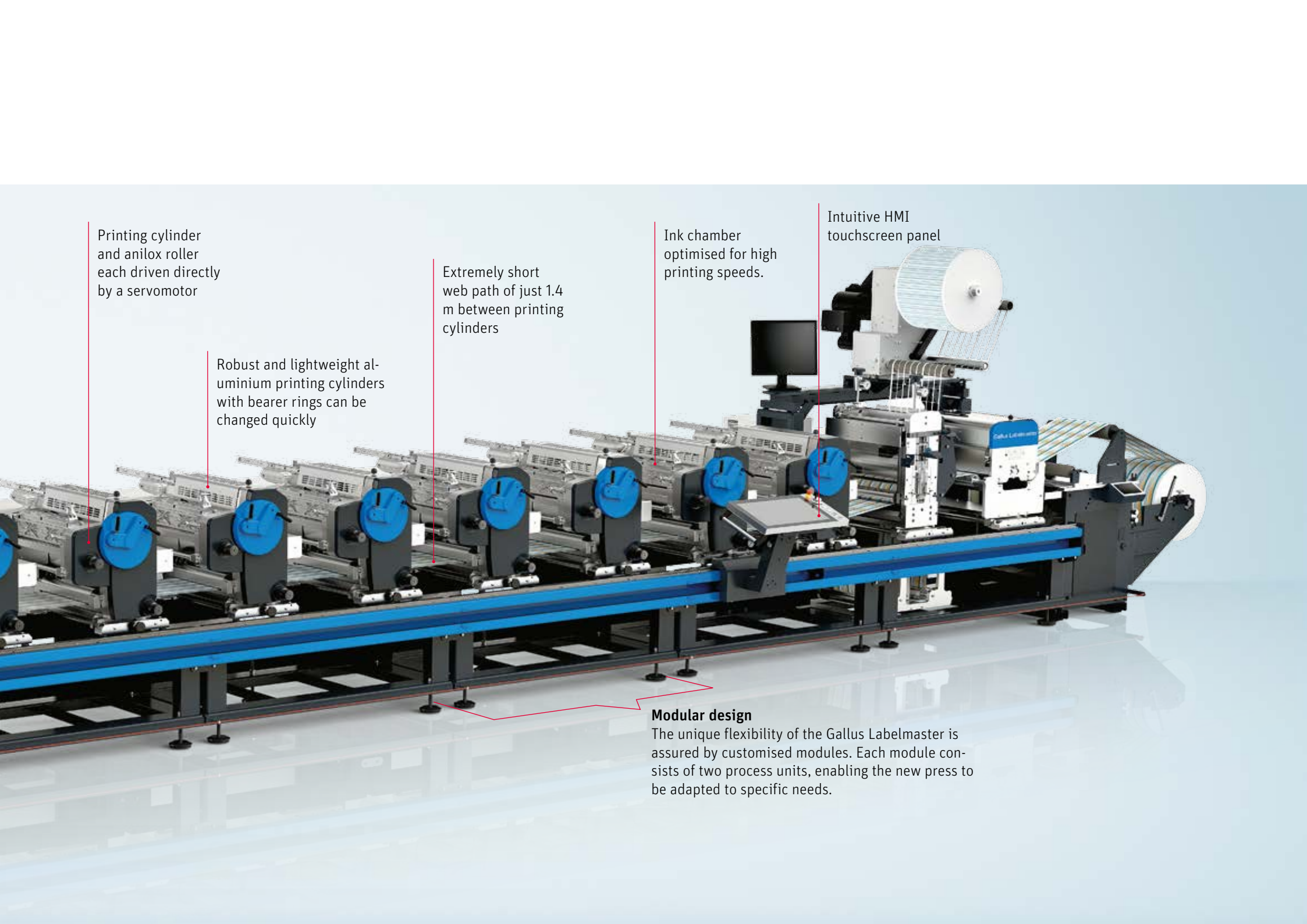
Comprises web pretreatment, printing, finishing and diecutting

### Tertiary process level

Optional implementation of the varnish flow path, hot-air drying system and/or web-edge control system.







Printing cylinder and anilox roller each driven directly by a servomotor

Robust and lightweight aluminium printing cylinders with bearer rings can be changed quickly

Extremely short web path of just 1.4 m between printing cylinders

Ink chamber optimised for high printing speeds.

Intuitive HMI touchscreen panel

### Modular design

The unique flexibility of the Gallus Labelmaster is assured by customised modules. Each module consists of two process units, enabling the new press to be adapted to specific needs.

# Gallus Labelmaster

## The model versions and their features

### Gallus Labelmaster

The low-cost, ideal entry-level model for label printing. This basic version of the printing platform consists of preconfigured modules and offers unique value for money.

### Gallus Labelmaster Plus

The Plus line offers additional options. As well as length register control as standard, it can also be equipped with features such as cross register control and/or alternative UV curing. Plus Line modules can also be combined with Advanced Line modules.

### Gallus Labelmaster Advanced

The Advanced line boasts maximum flexibility and a high level of automation. In this premium version, the length and cross register controls integrated as standard can be combined with all features in unlimited ways. The Advanced Line offers the ultimate in process flexibility, which means the various finishing and printing units can be changed quickly and easily at any machine position – the ultimate in flexibility.



	Gallus Labelmaster	Gallus Labelmaster Plus	Gallus Labelmaster Advanced
<b>Process changes</b>			
Permanently installed processes	■	■	
Changeover processes		▲	■
<b>Primary process level</b>			
Flexographic printing	■	■	■
Rotary screen printing	●	●	●
Hot foil embossing		▲	●
Rotary diecutting unit	■	■	■
Rotary embossing unit		▲	●
Crosscutting unit	●	●	●
Sheet delivery	●	●	●
<b>Cross-adjustment</b>			
Manual	■	■	
Motorised		●	■
<b>Automatic register control</b>			
In direction of web travel	●	■	■
In transverse direction		●	■
Insetting		●	●
<b>Web conditioning</b>			
Web-cleaning system	●	●	●
Corona treatment	●	●	●

	Gallus Labelmaster	Gallus Labelmaster Plus	Gallus Labelmaster Advanced
<b>Ink drying</b>			
GEW E2C	■	■	■
GEW UV LED	●	●	●
GEW ArcLED Power Supply	●	●	●
Alternative UV curing systems		●	●
<b>Web video</b>			
Manual	■	■	
Motorised		●	■
<b>Antistatic devices</b>			
Passive antistatic device	●	●	●
Active antistatic device	●	●	●
<b>Secondary process level</b>			
Rail system	●	●	●
Cold foil	●	●	●
Lamination	●	●	●
Web-turn mechanism	●	●	●
Reverse-side printing	●	●	●
<b>Tertiary process level</b>			
Extended varnish flow path	●	●	●
Hot-air final curing	●	●	●

- Standard
- Optional
- ▲ Optional only with Advanced modules



# Gallus Labelmaster

## Technical data

### Machine data

#### Machine data

Mechanical machine speed max.	200 m/min	656 ft/min
Max. web width	445 mm	17.5"
Min. web width	220 mm	8.7"

#### Print

Max. printing width	440 mm	17.3"
Max. format length	635 mm	25"
Min. format length	*1) 203.2 mm	8"
Max. number of print operations	14	

#### Drying/curing

UV	✓
Hot-air drying (final curing)	✓

#### Processing

Max. web width	440 mm	17.3"
Max. format length	635 mm	25"
Min. format length	305 mm	12"
Max. number of processing operations	6	
Max. number of process positions	16	

#### Substrates

Self-adhesive materials	✓
Paper	✓
Cardboard	✓
Monofoil label materials	✓
Tube laminates	✓

#### Remote diagnosis

Gallus Remote Access	✓
----------------------	---

\*1) Screen from 10 5/8"

All technical data represents approximate values. Technical data may vary depending on the machine configuration, job, web width, consumables, substrate and possibly other factors.

Gallus reserves the right to make technical and other changes.



## Gallus Services

### Gallus Customer Service – completely individually

#### Technology Support

Innovation gives our customers a crucial competitive edge. The experienced Gallus team provides them with optimum coordination of print and finishing options, application tests and professional consulting and support for all operational processes.

#### Customer Support

The press's availability has a major impact on production, determining, for example, whether delivery times are met and production costs kept within budget. Through continuous and long-term maintenance, we help our customers minimize production stoppages and maximize press availability.



### Gallus Original Parts & Consumables

A chain is only ever as strong as its weakest link. An insignificant fault can have a huge impact – if a sensor fails, for example, this can shut down an entire press or reduce print quality. Printing accessories, original service parts and overhauls are just a few other factors affecting print quality.

#### Gallus Training

Employee expertise in using and maintaining a press is a key success factor in maximising productivity and print quality. We provide support to our customers with various training options, either at the Gallus customer centre or directly at the customer's premises.



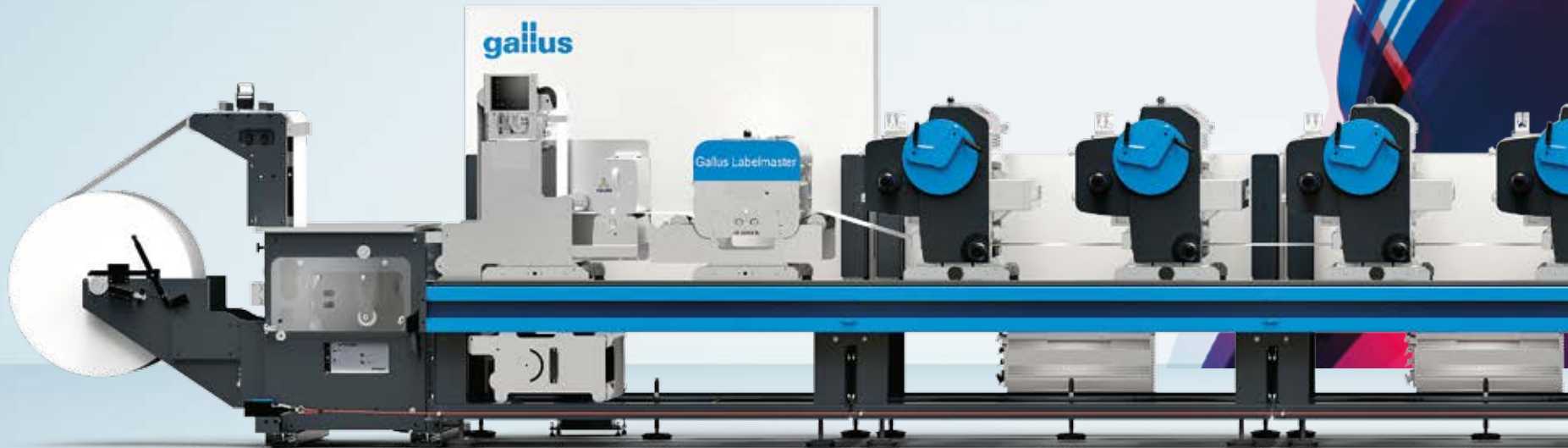
### Gallus Rotascreen – simple integration for optimum results

Screen printing is an excellent option particularly when good coverage, precise detail and colour intensity are needed to obtain brilliant, high-quality images. The Gallus rotary screen printing units can be easily integrated into most Gallus machines. Printing systems using screen printing in combination with flexographic printing and hot foil embossing are supported alongside a variety of processing functions. The printing units can be easily replaced, which means that the machine system can be reconfigured for every printing job.



# gallus

Gallus Ferd. Rüsch AG  
Harzbüchelstrasse 34  
9016 St. Gallen, Switzerland  
T +41 71 242 86 86  
F +41 71 242 89 89  
info@gallus-group.com  
www.gallus-group.com



Gallus and SCREENY are registered trademarks of Gallus Ferd. Rüsch AG in Switzerland and other countries.  
All other trademarks are property of their respective owners. This publication is protected by copyright.